

## This offer includes...

- Bed and Breakfast Accommodation (all rooms en suite and non smoking)
- Plus Group 'A' Hire Car to meet your flight or delivered to the hotel (excluding petrol and insurance, please remember to bring your driving licence)
- Plus bottle of Bubbly and Guernsey Fudge in your room on arrival

## THIS MINI BREAK WILL COST ONLY

12 March - 30 April 2012 and 1st October - 11 November 2012

2 Nights - £98.00 pp	5 Nights - £245.00 pp
3 Nights - £147.00 pp	6 Nights - £294.00 pp
4 Nights - £196.00 pp	

1 May - 31 May 2012

2 Nights - £114.00 pp	5 Nights - £285.00 pp
3 Nights - £171.00 pp	6 Nights - £342.00 pp
4 Nights - £228.00 pp	

1 June - 30 September 2012

2 Nights - £129.00 pp	5 Nights - £322.50 pp
3 Nights - £193.50 pp	6 Nights - £387.00 pp
4 Nights - £258.00 pp	

## ADDED BONUS - STAY 7 NIGHTS AND PAY FOR 6

(based on two people sharing a twin or a double standard room, booked on a bed and breakfast basis)

All bookings must be made direct with the hotel quoting "Mini Break" Extra nights available.

Added value for half board (four course evening meal)  
£19.00 per person per night, if booked in advance

## FOR THAT EXTRA SPECIAL MINI BREAK BOOK THE LA BARBARIE SEAFOOD PLATTER

**On one night enjoy a Splendid Seafood Extravaganza**

**La Barbarie Seafood Platter consisting of:**

Fresh Guernsey Lobster, King Prawns, Langoustines, Prawns,  
Fresh Local Crab and Oysters (all subject to availability)  
Served with New Potatoes and Crisp Salad.

**Only £38.00 per person**

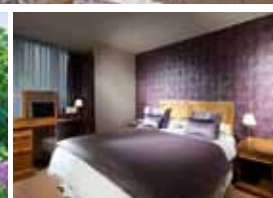
Please book in advance

Telephone: 01481 235217

Facsimile: 01481 235208

Email: [reservations@labarbariehotel.com](mailto:reservations@labarbariehotel.com)

Follow us on facebook [www.facebook.com/labarbariehotel](https://www.facebook.com/labarbariehotel)



# La Barbarie

HOTEL • RESTAURANT • BAR

Saints Road • St Martin • GY4 6ES

★★★★  
GUERNSEY TOURISM  
SILVER

AA

AA

★★★★ 81%  
RATING

FREE  
Wi-Fi

## Room Rates featured are per room, per night for Bed & Breakfast.

	Standard Twin/Double	Sole Occupancy	Superior Room Rate	Superior Sole Occupancy
12 March - 31 March	£79.00	£62.50	£103.00	£86.50
01 April - 30 April	£84.00	£70.00	£108.00	£94.00
01 May - 31 May	£97.00	£76.00	£121.00	£100.00
01 June - 30 Sept	£114.00	£85.00	£138.00	£109.00
01 Oct - 11 Nov	£83.00	£69.00	£107.00	£93.00

## The rates quoted are per room per night and include full English or Continental breakfast.

Guests reserving Dinner (Half Board) at time of booking can enjoy a preferential price of £19 per person, per night for the Table d'hôte menu. If reserved at any other time, the Table d'hôte price is £23.95 per person. Dress code in the restaurant is smart casual.

**CHILDREN** between the ages of 2 and 12 years sharing a Superior room with Sofa Bed will be charged £28.50 per night B+B (Rate based on one child sharing with two adults). Children under 2 years, free of charge. Cots and Highchairs are available at no extra charge.

### ALL ROOMS ARE NON SMOKING

#### STANDARD TWIN OR DOUBLE

Fully equipped en suite rooms to Visit Guernsey and AA 3 star standard.

#### SUPERIOR ROOMS

Large King Size or Twin beds, Luxury Bathroom and Bathrobes, DVD player, Sofa and occasional table and chairs. Some with Balcony.

#### SUITE

Two Room Suite add £35.00 per night. Large King Size or Twin beds, Luxury Bathroom and Bathrobes, DVD player. Separate Lounge area with TV, Sofa and occasional table and chairs. Balcony.

**BREAKFAST.** Full English or Continental breakfast is served from 7.30 to 9.30am.

**LUNCH.** Bar Lunches are served daily in the bar from 12 noon until 1.45pm.

**EVENING MEAL.** A four course Table d'Hôte evening meal is served in our award winning restaurant from 6.00pm. An à la Carte menu is available until 9.00pm daily. Guests on half board terms are most welcome to eat a la Carte though supplement charges will apply.

\* **ARRIVALS AND DEPARTURES.** Rooms are made available from approximately 2.30pm and to ensure this we ask departing guests to vacate their rooms by 10am on the morning of departure.

\* **DEPOSIT AND PAYMENT.** A non-refundable deposit equal to the total of the first night's accommodation is required at the time of your reservation. We advise Guests to insure against loss of deposit due to illness etc.

\* **CANCELLATION CHARGES.** All cancellations incur forfeiture of deposit. Further charges are as follows - 8 weeks plus: no other charge. 3 to 8 weeks: +20% of remaining balance, 1 to 2 weeks: +50%, 1 week to day of arrival: +75%, day of arrival or later: +100%.

\* **NEWSPAPERS.** Daily national papers are delivered to the island and can be ordered with reception.

\* **GROUP 'A' HIRE CAR.** £10 per day (excluding petrol, insurance and local taxes).

## The apartment tariff is per apartment per week. The maximum number of adults permitted is indicated below.

PRICE PER WEEK	2 Adults 1 Bedroom	4 Adults 2 Bedrooms
12 March - 31 March	£350.00	£476.00
01 April - 30 April	£441.00	£700.00
01 May - 31 May	£539.00	£770.00
01 June - 30 Sept	£665.00	£910.00
01 Oct - 11 Nov	£455.00	£560.00

### ALL APARTMENTS ARE NON SMOKING

**MEALS.** Guests in the apartments are welcome to dine in the hotel restaurant, though **reservations are strongly advised to avoid disappointment.**

**GROCERIES.** These may be obtained from the local large supermarkets 1 mile away.

**COTS AND HIGHCHAIRS.** Cots can be provided at £5 per day, and highchairs at £2 per day. Please reserve these at the time of booking your accommodation.

**EQUIPMENT, BEDDING** etc. All apartments are comprehensively equipped for self catering holidays including bedding, bath and hand towels, tea towels, cleaning starter packs etc. Guests staying for more than one week will be provided with clean linen at the end of each complete week.

\* **DEPOSIT AND PAYMENT.** A non-refundable deposit equal to the total of the first night's accommodation is required at the time of your reservation. We advise Guests to insure against loss of deposit due to illness etc.

\* **CANCELLATION CHARGES.** All cancellations incur forfeiture of deposit. Further charges are as follows - 8 weeks plus: no other charge. 3 to 8 weeks: +20% of remaining balance, 1 to 2 weeks: +50%, 1 week to day of arrival: +75%, day of arrival or later: +100%.

\* **ARRIVALS AND DEPARTURES.** Apartments are available from approximately 3pm and in order to ensure this we ask our guests to vacate by 10am on the morning of departure.

\* **LAUNDRY.** A small token operated laundrette is available on the premises for guest use. Tokens can be purchased at reception.

\* **PETS.** In the interest of all our guests we regret that dogs and other pets are not permitted in the hotel or apartments.

*Please note the hotel closes from Sunday 11 November 2012 and re-opens on 11 March 2013.*

*The Management reserve the right to amend any of the above details should it become necessary.*

